

DEMO FARM	GNP
Farm name	Az. Magistrali Anna
Project area	Colli Piacentini
Demonstrative vineyard	
Variety	Ortrugo
Rootstock	SO4
Training system	Guyot
Vine spacing	2.00 x 1.00 m
Row orientation	NW-SE
Altitude	275 m a.s.l.
Geographical localization	44°55'51.12"N - 9°22'7.00"E

Action plan description

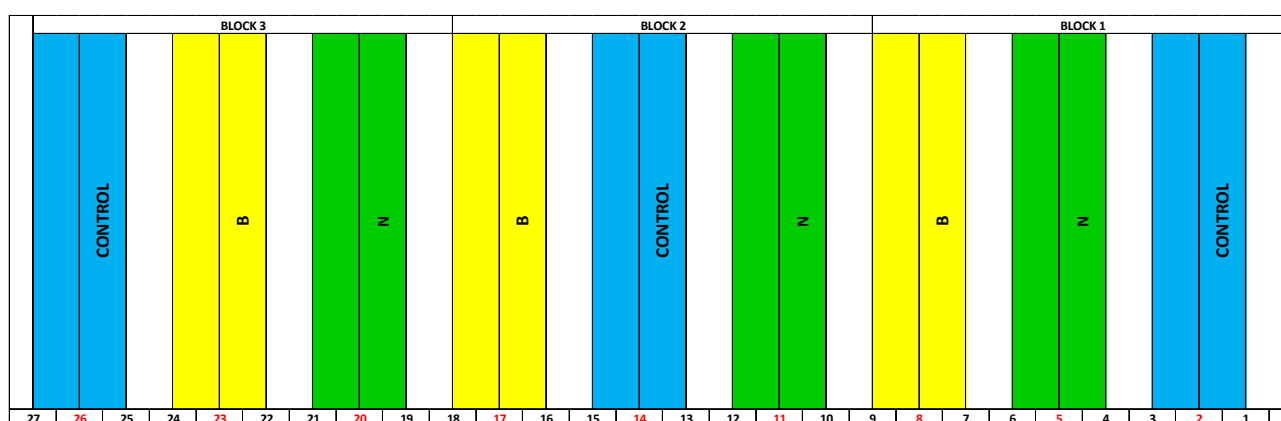


Figure 14. Experimental map of GNP demo vineyard. For each treatment 3 blocks were defined and, in each block, 3 plants were tagged for vine behavior assessment.

Resilience techniques applied

Techniques	Description
N	Between rows space grassed with the N seeds mixture and then finished with green manure technique (GM).
B	Between rows space grassed with the B seeds mixture and then finished with green manure technique (GM).
Control	Standard farm management with tilled inter-row and under-row

What we do

Activities	Date	Notes
Season 2021		
Sowing	Late spring	
Termination	12-18 th May	

Harvest	7 th September	
Pruning	25 th January (2022)	
Season 2022		
Sowing	19 th October (2021)	mixtures: N, B
Termination	21-25 th May	green manure
Harvest	31 th August	
Pruning		Not yet performed

Data collected

Meteorological data (season 2022)

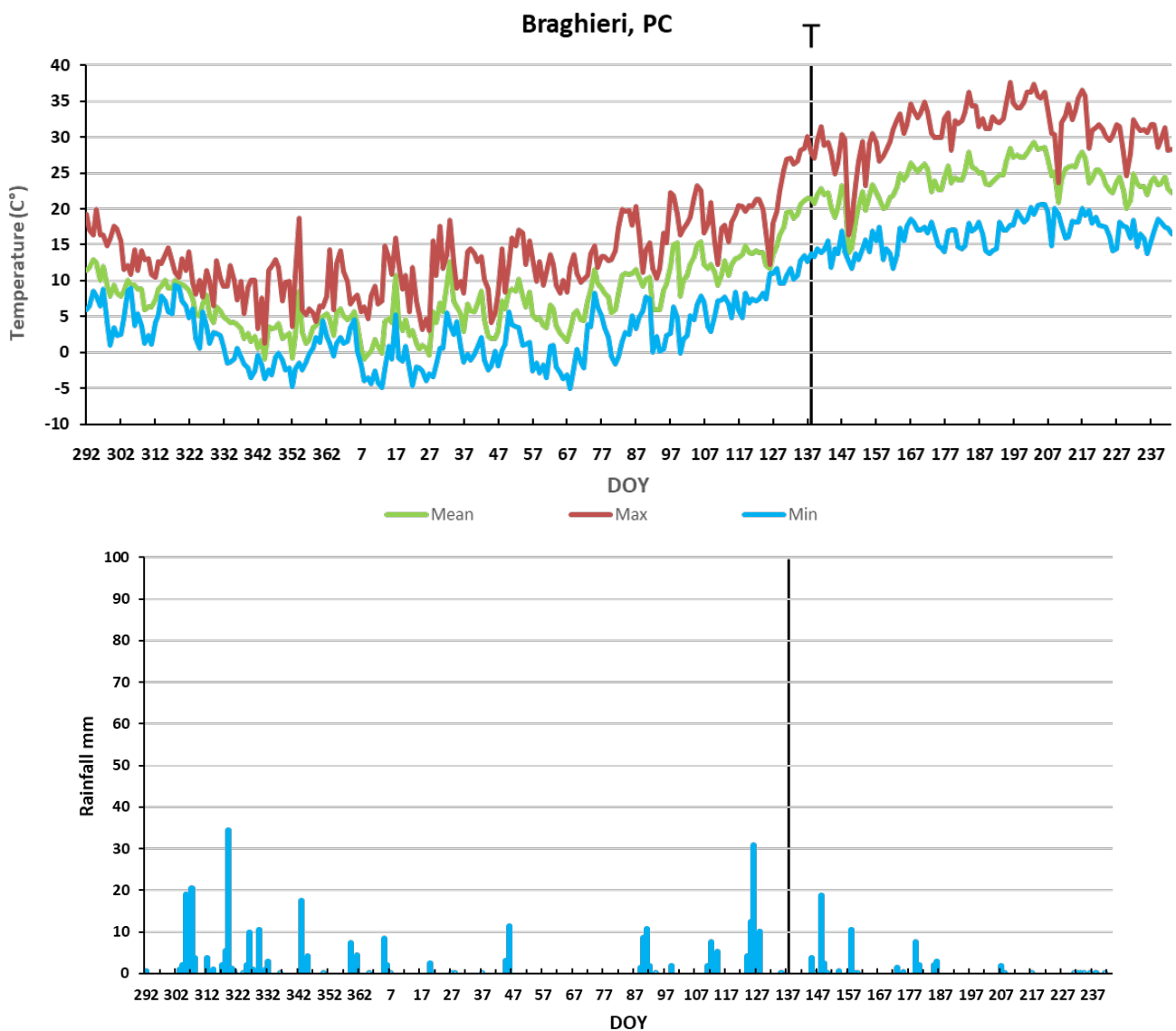


Figure 15: Temperature and Rainfall from sowing 15/10/21 to 31/08/22.

Activities

Some critical aspects emerged during the tillage and sowing phases: the vineyard has a narrow row spacing, which allowed sowing operations to be carried out only manually. The low rainfall in the autumn and winter period allowed for a moderate development of the sown mixtures.



Figure16: Biomass evaluation 20/05/2022 and harvesting 31/08/2022.